



icompare

for commissioners

Benchmark your
commissioning activity

Track GP
referral
patterns

Monitor
patient
flow

Identify
unwanted
variations

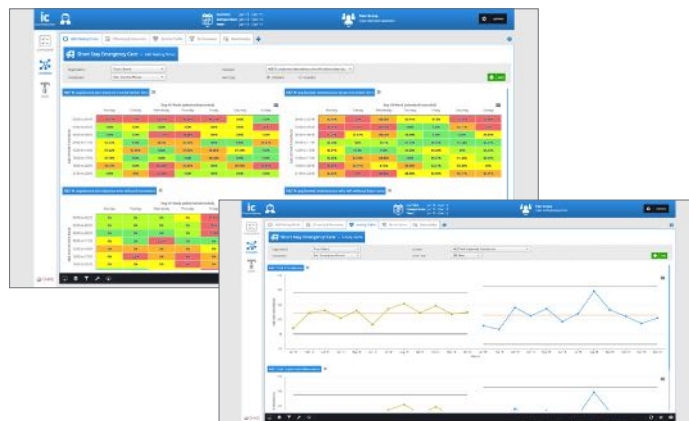
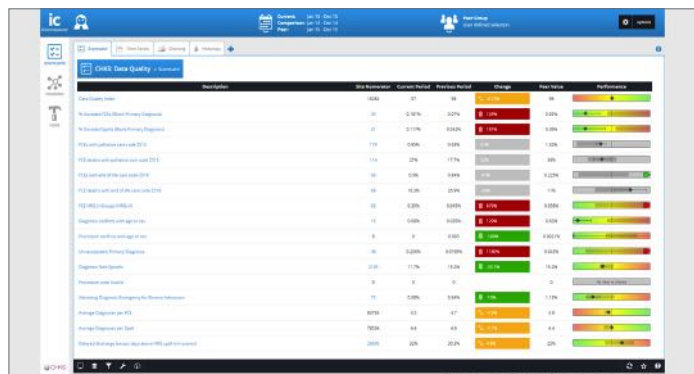
Achieve
your best
investment
outcomes

The challenge

Faced with rising demand, ever tightening financial constraints and overall responsibility for commissioning appropriate high quality services on behalf of their local patient populations, CCGs need reliable timely information to support the tough decisions they have to make every day.

The CHKS solution

iCompare for commissioners enables CCGs to benchmark their delivered commissioning activity based on the expected demands of their population and local provider performance against a range of external peer groups. Our cloud-based analytics and reporting service uses nationally derived data to provide a range of case mix and population adjusted measures. This allows CCGs to externally compare and track their performance over time, which helps ensure they achieve the best investment outcomes they can for their patient population.



What does it allow you to do?

- **Benchmark commissioning activity based on the expected demands** of the population based on standardised population metrics
- **Benchmark the quality, efficiency and outcomes** of the acute providers you commission to - using national, best in class or locally selected peer groups
- **Evaluate the appropriateness of the investment** in the range of services being commissioned - based on programme budget categories, treatment function or condition benchmarked with external peers
- **Track GP referral patterns** and costs to ensure they align with local plans
- **Monitor patient flow within the local health system** to identify inappropriate pathways or care settings across primary and secondary care and assess their financial impact
- **Identify unwarranted variations in performance** such as cost, quality and activity against annual plans and the underlying factors - allowing any remedial action to be taken to close the gaps
- **Improve annual planning, future commissioning and service target setting** by providing a benchmarked derived evidence base to underpin assumptions

Benefits

- **Delivers decision ready information on demand** - directly to those who need it without the historical data gymnastics they would have to perform to produce it
- **The point and click functionality** means you don't need teams of data analysts to interrogate the data to get the answers you are looking for
- Ability to **compare performance** to a wide range of KPIs already set up in the system
- **Supported by our healthcare experts** who will help to configure reports and support the CCG to interpret your data
- **Option to incorporate additional disparate data sets** as they become available - for example social care or GP data sets

Who is it for?

iCompare for commissioners supports a variety of end users including CCG executive teams, commissioning or contract managers, planning and performance managers as well as locality teams and GP practices.

To find out more, please contact us:
T: + 44 (0)333 241 2432 E: info@chks.co.uk
or visit chks.co.uk